

Protégé Standard 16 Zone Input Expander

Protégé Standard 16 Zone Input Expander

The Protégé Standard 16 Zone Expansion Interface module provides the interface of up to 16 zone inputs and one programmable output to the Protégé Integrated Access Control, Security and Building Automation system, an advanced technology security product providing seamless and powerful integration.

The Protégé Standard 16 Zone Expansion Interface module provides interface with up to 16 zone inputs using industry standard alarm detection devices (Motion Sensor, Contact) and one low current programmable output.

Zone Expansion

The Protégé Standard 16 Zone Expansion Interface provides extensive hardware advancements that provide flexible zone programming and configuration:

- Connect any combination of normally closed or normally open zones, configurable per zone input.
- Utilizes analogue to digital processing with 5X over sampling.
- Four state zone alarm using resistors to provide Short, Alarm, Closed and Tamper conditions.

Connectivity and System Expansion

Expanding the Protégé System with local Zone (Input) and PGM (Output) from the 16 Zone Expansion Interface module allows convenient cost effective expansion:

- 16 Zones can be assigned in to any four areas in the system each being processed using different options or features.
- Address configuration of the protégé multiple reader interface is achieved using an eight way DIP switch.
- Add 4 PGM outputs (2 High Current Bell Siren, 2 Low Current).

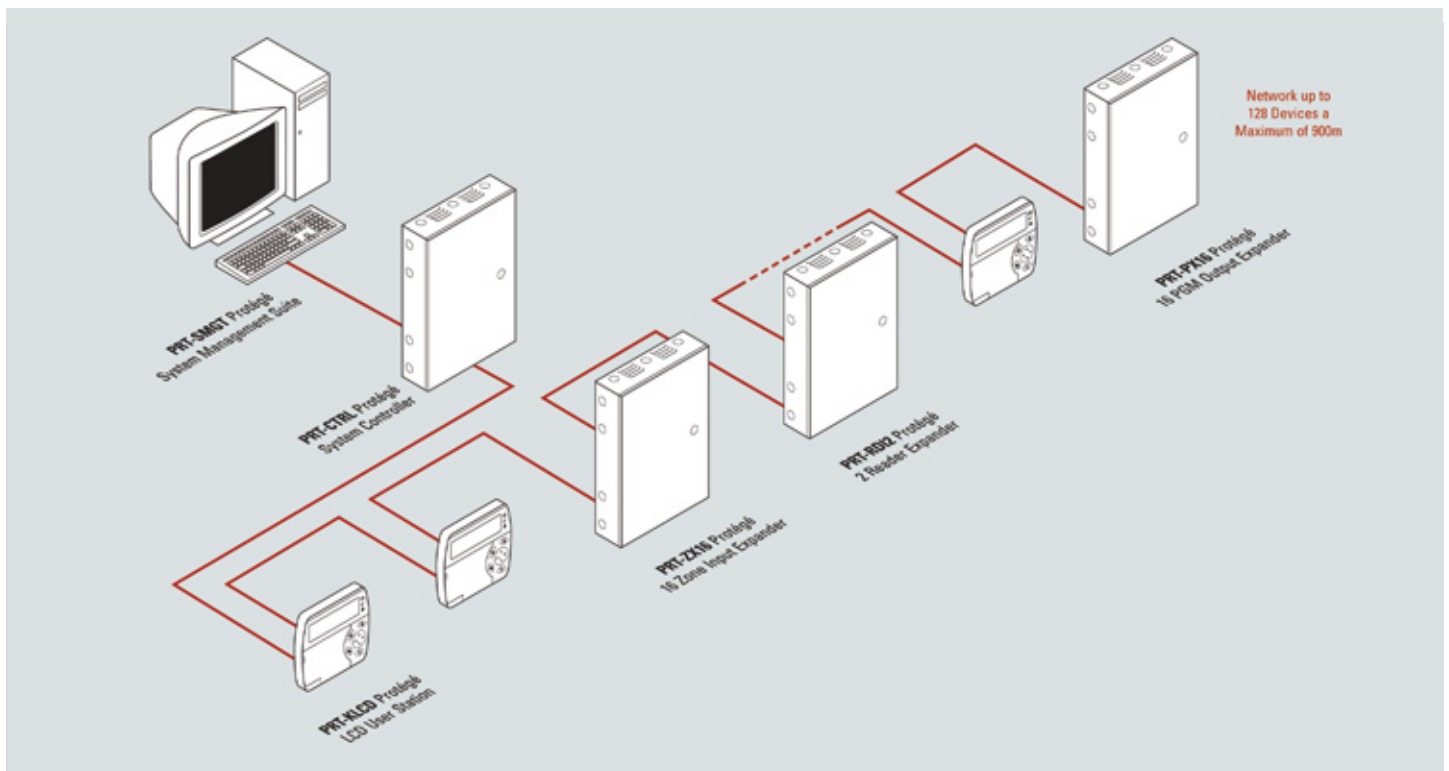
Communication

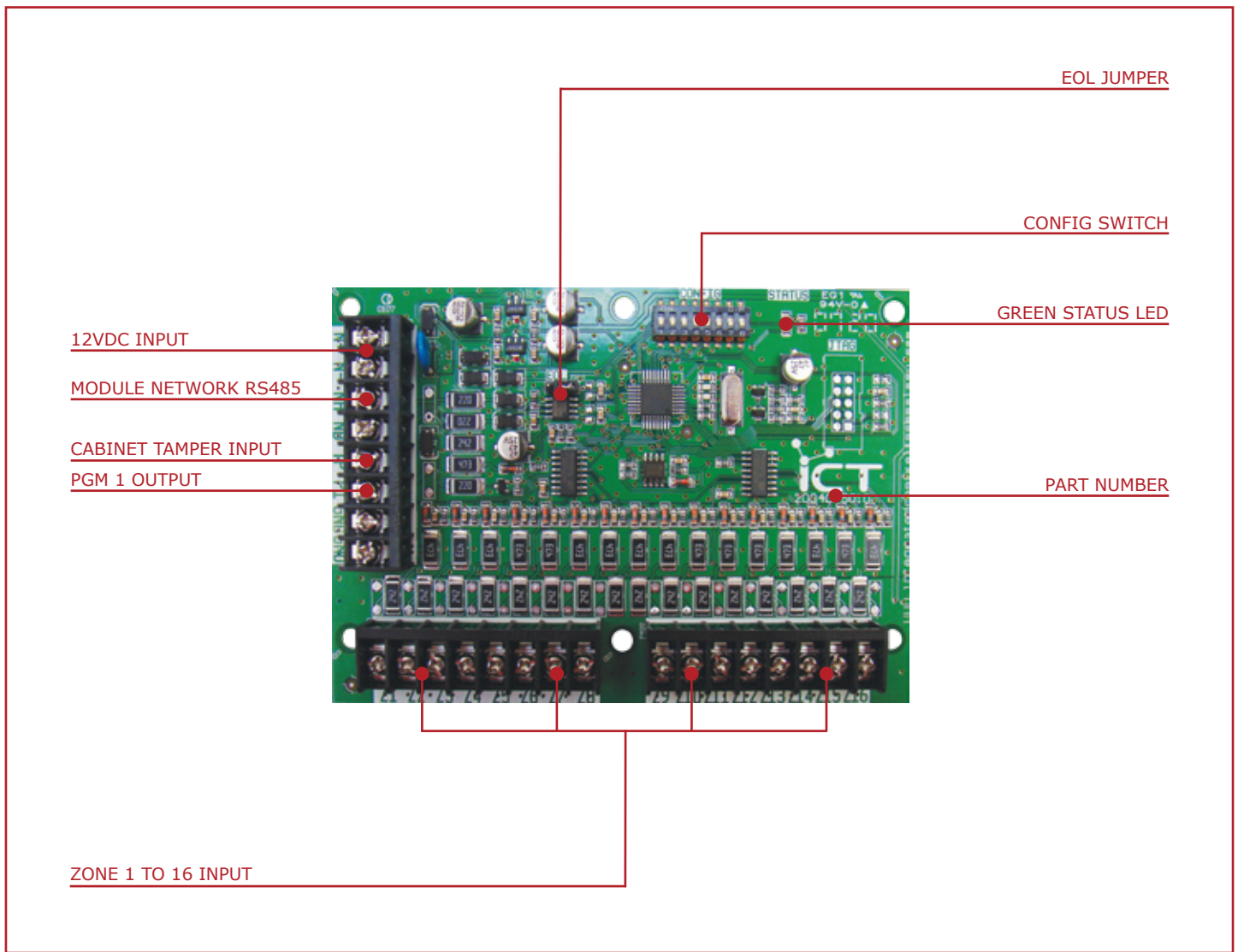
RS-485 communication interface port. Network RS-485 port used for all network communication functions and interconnects to other modules.

Programmable Outputs

Standard low current PGM output can be used to activate LED, Relays or low current signalling devices. Technical Specifications.

Standard Configuration





Technical Specifications

Power	Operating Voltage Operating Current	11.5VDC to 14.25DC 47mA (83mA Max)
Cable Specifications	Protégé RS-485 Encrypted System Network Communication Power Sensor Devices	Beldon Part Code 9842 or Equivalent. CAT5 / 5e (900m) or Similar. 24Awg Minimum Industrial instrumentation cable that complies with the local installation standards.
Communication		Serial RS485 Communication Interface Port
Zone (Inputs)	System Zones	16 Standard Zones dual EOL resistor (1K+1K) or no resistor per zone. Enclosure Tamper, Normally Closed.
PGM (Outputs)	System PGMs	1 50mA (Max) Open collector output for general functions
Temperature	Operating Storage Humidity	5° to 55°C (41° to 131°F) -10° to +85°C (14° to 185°F) 0%-85% (Non Condensing)
Dimensions	Height Width Depth Weight	93mm (3.66") 130mm (5.11") 12mm (0.47") 165gms (5.82 ounces)
The size of conductor used for the supply of power to the Protégé Standard 16 Zone Expansion Interface should be adequate in size to prevent voltage drop at the power terminals.		

International Compliance Standards:

The Protégé Standard 16 Zone Input Expander complies with the following international standards.

For an installation of the Protégé Standard 16 Zone Input Expander to comply with any of the standards all installation procedures and programming configuration settings must be made in accordance with the required standard.

**Disclaimer:**

Whilst every effort has been made to ensure accuracy in the representation of this product, neither Integrated Control Technology Ltd or any employee of the company, shall be liable on any ground whatsoever to any party in respect of decision or actions they may make as a result of using this information. In accordance with the Integrated Control Technology policy of enhanced development, design and specifications are subject to change without notice.

Designed and manufactured by:

Integrated Control Technology Limited

Protégé® and the Protégé® Logo are registered trademarks of Integrated Control Technology Limited.

Copyright © Integrated Control Technology Limited 2003-2008. All rights reserved.

**Integrated Control Technology Limited**

Unit C, 6 Ascension Place, Mairangi Bay, Auckland, P.O. Box 302-340, North Harbour, Auckland, New Zealand

P +64 9 476 7124, F +64 9 476 7128

support@integratedcontroltechnology.com

www.integratedtechnology.com

Designers and manufacturers of integrated electronic access control, security and building automation products.