

**Protégé Dual Serial Communication Interface**

## Protégé Dual Serial Communication Interface

The Protégé Dual Serial Communication Interface provides the connection of two fully compliant DTE EIA-232 serial ports to the Protégé Integrated Access Control, Security and Building Automation system, an advanced technology security product providing seamless and powerful integration.

The Protégé Dual Serial Communication Interface provides the connection of two fully compliant DTE EIA-232 serial ports to the Protégé System Controller.

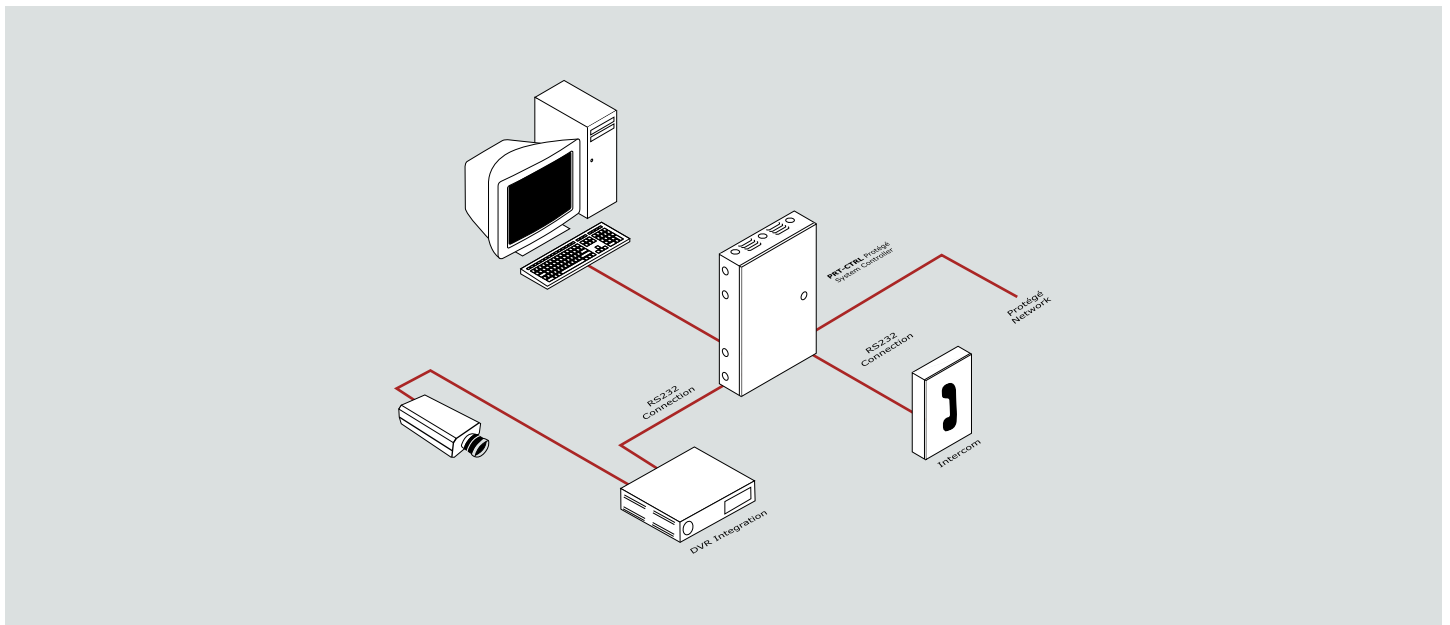
A daughter interface card that connects to the processor expansion port the PRT-COMM Serial Communication Interface can be used to connect to Intercoms, Automation Equipment, Digital Video Recorders (DVRs) and many other devices.

### Hardware Interface

The Protégé Dual Serial Communication Interface provides extensive hardware advancements that provide flexible connectivity options:

- Connect with standard DB9 connectors that comply with the EIA-232 standard.
- Provision for standard wire terminals using the RXD, TXD and GND connections for simple serial connection services that do not require hardware flow control functionality.
- Indication of the receive and transmit data from either of the two serial ports for simple diagnostics.
- Offset staggered mounting makes the interface connection extremely manageable by using standard 40 way flexible cable connections.

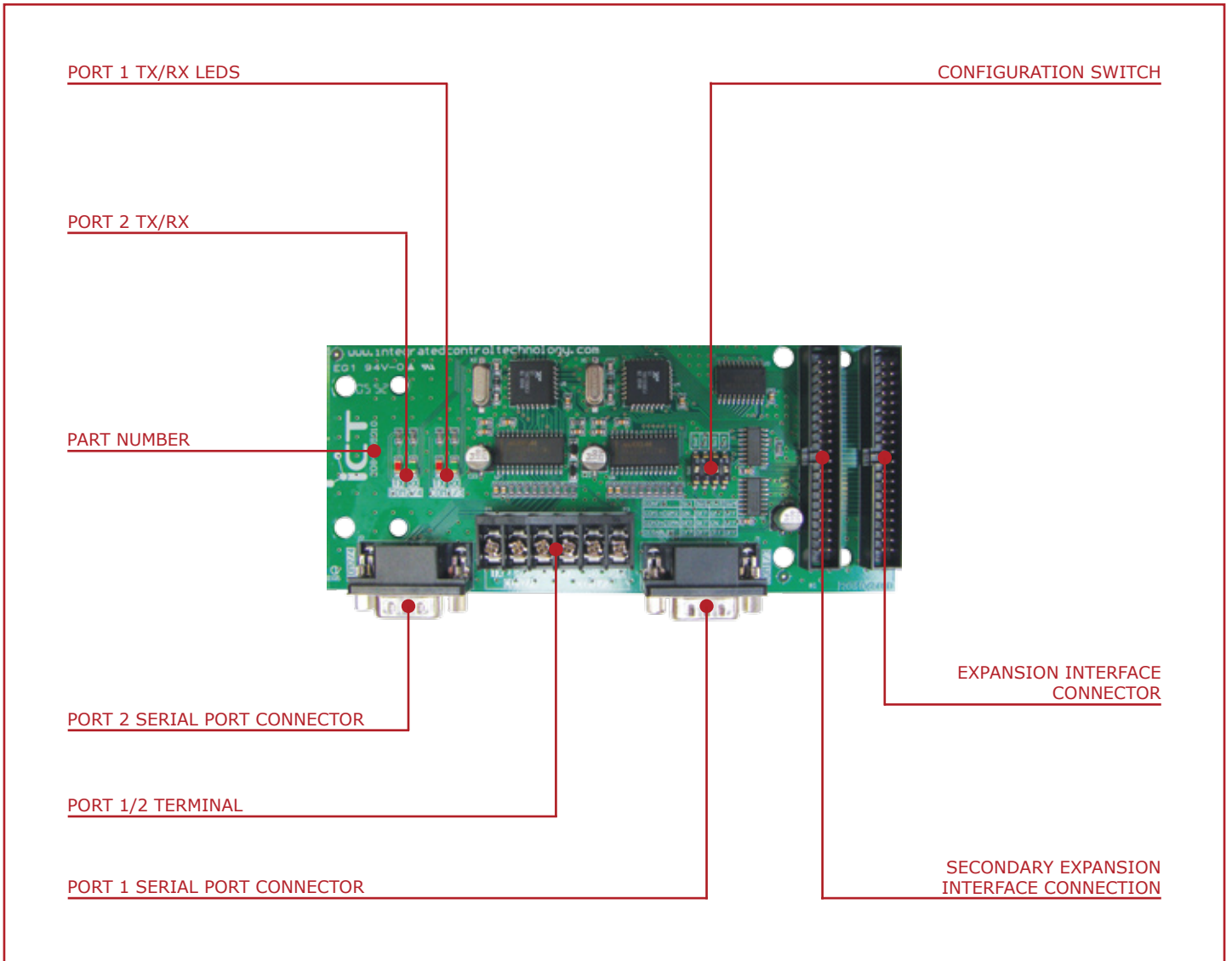
### Standard Configuration



### Connectivity and System Expansion

Primarily used to control external devices that connect using an RS232 or similar connection the Protégé PRT-COMM Dual Interface can also be used to control a host of protocols and options:

- Connection to the expanded communication ports can be made using nearly all supported services in the Protégé System Controller.



## Technical Specifications

Power	Operating Voltage Operating Current	3.3VDC 11mA (23mA Max)
Concurrent Devices		System Controller Support for the Connection of Two PRT-COMM units per System Controller
Cable Specifications	Beldon Part Code 9857 or Equivalent. EIA-232 Standard EIA-232 Compliant Cable.	Distance 25 Meters (85 Feet) (Max)
Interface Connection		System Controller 40 Way Offset Dual IDC Ribbon Connection
Serial Connection		DB9 Male Connector Fully Compliant EIA-232 Interface. 3 Way Connector Standard RXD, TXD and Ground Connections For Simple EIA-232 Connectivity.
Temperature	Operating Storage Humidity	5° to 55°C (41° to 131°F) -10° to +85°C (14° to 185°F) 0%-85% (Non Condensing)
Dimensions	Height Width Depth Weight	67mm (2.63") 155mm (6.10") 19mm (0.74") 240gms (8.46oz)

The size of conductor used for the supply of power to the Protégé Dual Serial Communication Interface should be adequate in size to prevent voltage drop at the power terminals of no more than 5% of the rated supply voltage.

**International Compliance Standards:**

The Protégé Dual Serial Communication Interface complies with the following international standards.

For an installation of the Protégé Dual Serial Communication Interface to comply with any of the standards all installation procedures and programming configuration settings must be made in accordance with the required standard.

**Disclaimer:**

Whilst every effort has been made to ensure accuracy in the representation of this product, neither Integrated Control Technology Ltd or any employee of the company, shall be liable on any ground whatsoever to any party in respect of decision or actions they may make as a result of using this information. In accordance with the Integrated Control Technology policy of enhanced development, design and specifications are subject to change without notice.

Designed and manufactured by:

Integrated Control Technology Limited

Protégé® and the Protégé® Logo are registered trademarks of Integrated Control Technology Limited.

Copyright © Integrated Control Technology Limited 2003-2008. All rights reserved.

**Integrated Control Technology Limited**

Unit C, 6 Ascension Place, Mairangi Bay, Auckland, P.O. Box 302-340, North Harbour, Auckland, New Zealand

P +64 9 476 7124, F +64 9 476 7128

support@integratedcontroltechnology.com

www.integratedtechnology.com

**Designers and manufacturers of integrated electronic access control, security and building automation products.**